



INSIDE THIS ISSUE:

<i>From Pastor Bjorge</i>	2
<i>Adult Discipleship</i>	3
<i>Preschool News</i>	4
<i>Calendar</i>	6
<i>Council Highlights</i>	7
<i>Why Are We Here?</i>	8
<i>New Socks</i>	9
<i>Helping Hands</i>	9
<i>FLRBY</i>	10
<i>Music Ministry</i>	11
<i>Consecration Sunday</i>	12

Special points of interest:

- Becoming Partners in God's Work—see page 3
- The Story of Jesus: The Power to Change Lives—see page 7
- Mission Jamaica—January 24-31—see page 8

OUR MISSION: To be a gathered people living, loving and serving as Jesus

Autumn Days at FLRB

Start Your Fall by Putting First things First... at First!

Most classes for adults and children are underway, but it's never too late to join in. Check out the rest of the Beachcomber or our Website at www.flrb.org for a complete listing of classes, groups, events and programs for all ages.

Kid's Programs

Sunday School

Sundays at 9:45

- › **Living Inside Out** - 3yr-4th grade
Large group/small group format
- › **Club 56** - 5th -6th Grade
Focuses on relationships (friends, church), faith questions (who is God, what's the big deal about sin?), choices, peer pressure, and priorities)
- › **Confirmation** 7th-8th Grade
Focuses on relationships with God, others, and self.
- › **9th Grade Confirmation**
New Testament, Luther, and looking deeper at faith and living as a Christian.
- › **High School**
Small group studies by gender.
- › **Harvest Party (and Trunk or Treat) - Wed., October 29th. For all children, youth and families!**

Village Night

Wednesdays

FLRB's weekly program for students in grades 1-12 is full of relevant teaching, great music, excellent food and plenty of time to hang out and talk. See page 6 for the details.

Adult Programs

- › **Bible Studies,**
- › **An Evangelism Workshop on Sharing the Story of Jesus** (Oct. 18)
- › **Musical Opportunities**
- › **Book Studies**
- › **Senior Lunches** (third Wednesday of each month beginning this month)
- › **Outreach Activities** (this month we focus on the Compass Center)
- › **Care Ministries**
- › **Teaching Opportunities**
- › **Hospitality Teams, and more.**
- › **A Course on Marriage** (sponsored by ALPHA starting this winter)

Put First Things First...

- › Find a place that will help you build a confident faith!
- › Get connected to a ministry that will equip you with a faith that works in real life!
- › Be part of a ministry that shares God's love with others!

Every member is a minister!

Find your particular ministry this year!

Get connected to Jesus and to his church in a new way! It'll be a blessing to you and to so many others!

FROM PASTOR BJORGE

Ever get a sense that people are watching... watching you and me... watching our church? They're curious if we're going to fit their stereotype. So, in their mind, they have questions. They're not curious if you go to church on Sundays. Instead, they want to know if you live your faith 24/7. They don't want to know what you believe. They want to know what your experience of Jesus is. They don't want to know if your worship is proper. They want to know if your worship will be a life-changing encounter with God. They don't want to know if you have a faith that makes sense. They want to know if you have a faith that works in real life. They don't want to know if you are sincere. They want to know if you are authentic. They don't want to know if you know the Lord's Prayer. They want to know if you can teach them to pray. They don't want to know about a theological Christ. They want to know a personal Jesus.

"How we spend our money determines what sort of people we become."

But it doesn't stop there. You see, they don't want to just know if you give money to worthy causes. They want to know if you live a life of extravagant generosity. Do you orient your lifestyle around your giving? Or does your lifestyle determine your giving? Because how we spend our money affects who we become!

Everyone, put your hand on your wallet or purse. Whose money is in there anyway? It's God's, isn't it? Everything we have and are is a gift from him. That's what stewardship means, right? We are caretakers of what has been entrusted to us. It's an amazing system. God has designed his Kingdom on earth so it can only work with our input. He entrusts the money he needs to expand his Kingdom with us. He also does this because he knows how much we need to give and share.

So how much is appropriate to give? There is no formula. Faith must grow in order for giving to increase and that's a slow process. If you don't have enough faith to give generously, then ask God for more faith. He loves to answer prayer like that.

When thinking about giving, it's important to give enough to cause downward mobility in your lifestyle. Two years ago I attended a prevailing church conference at Willow Creek Community Church in Chicago. I was impressed to learn that one of their core values in this wealthy area of Chicago is downward mobility. They literally encourage people to drive older, smaller cars, live in smaller houses and spend less on vacations to make available more resources for building the Kingdom of God. There are many ways in which we could do that.

In "The Weight of Glory" by C.S. Lewis, Lewis writes:

For he has, in the last resort, nothing to give us but himself; and he can give that only insofar as our self-affirming will retreats and makes room for him in our souls. For he claims all, because he is love and must bless. He cannot bless us unless he has us. When we try to keep within us an area that is our own, [like our money] we try to keep an area of death. Therefore, in love, he claims all. There's no bargaining with him.

Sauerkraut Meal
 October 26th
 After 11am service
 Fundraiser to support
 confirmation and high school youth



Do you want to be wealthy? Then read this carefully. Wealth is not in what one possesses, but by whom one is possessed.

BECOMING PARTNERS IN GOD'S WORK

My child, I've often heard your question. This message is my answer. You're concerned about the hungry in the world, millions who are starving...and you ask, "What can I do?"

FEED ONE!

You grieve for all the children who die of malnutrition in impoverished countries...and you ask, "What can I do?"

SAVE ONE!

You're haunted by the homeless poor who wander city streets...and you ask: "What can I do?"

SHELTER ONE!

You feel compassion for those who suffer pain, sorrow and despair...and you ask: "What can I do?"

COMFORT ONE!

Your heart goes out to the lonely, the abused and the imprisoned...and you ask: "What can I do?"

LOVE ONE!

Remember this: My child... two thousand years ago the world was filled with those in need, just as it is today, and when the helpless and the hopeless called out to me for mercy, I sent a Savior.

HOPE BEGAN WITH ONLY ONE!

—B.J. Hoff (Adapted)

"...when the helpless and the hopeless called out to me for mercy, I sent a Savior."

ADULT DISCIPLESHIP

New Community

Sundays—9:45 am

First Lutheran offers a class for adults between worship services (9:45-10:45) taught by Pastor Bjorge. Last year we discovered God's desire for community as we spent over 30 sessions in the Old Testament. This year we turn to the New Testament to discover God's continuing desire for new community, created and led by his very own Spirit, within the church. This fall we will study the **book of Acts** and this winter we will examine God's dream of the future community and its present-day implications by studying the **letter of Revelation**. These classes are presentational in style and open to all! This class takes place each Sunday.

Word of Life

Wednesdays—10 am

This class is also taught by Pastor Bjorge and focuses on the Biblical readings for the upcoming Sunday. The class begins with time in the Daily Texts as we learn to pray the way Luther instructed. It then moves to the ensuing Sunday's texts. This class is conversational and open to all.

Food for Thought

Join this small group for a meal and book discussion. The upcoming book is Philip Yancey's Disappointment with God. Contact Marin Brustuen for details.

Village Night

Wednesdays from 6:30-7:30

Men's Bible study - Alan Herr facilitates a group called "Carharts for Christ," a men's ministry group that reads and discusses different books. New men are wel-

come!

The Story of Jesus: The Power to Change Lives!

Saturday, Oct 18; 10a-12p
This workshop is for leaders and anyone interested in learning how we can better share the story of Jesus. Facilitated by Pr. Bjorge.

Women's Ministry Mary and Martha Circle

This Bible study group meets the 2nd Thurs at 10 am at Top Food in Shoreline.

Deborah Circle

This Circle meets the 3rd Tuesday of the month at noon in the Library or a members' home for a Bible Study and is led by Dorothy Clausen.

Monday Nights

Fran Uchida leads this weekly study at the church each Monday at 7:00 pm.

"What you and I return to the Lord is in direct proportion to how well we understand who we are, why we are here, and our willful commitment to try and express our thanks."

All of these Adult Discipleship opportunities are open to new people! Check them out and deepen your faith!



PRESCHOOL NEWS

FAMILY FAITH WALKS-OCTOBER

WINGS LIKE EAGLES

"But those who hope in the LORD will renew their strength. They will soar on wings like eagles; they will run and not grow weary, they will walk and not be faint." Isaiah 40:31

Faith Walk:

Walk to a spot where flocks of migrating or congregating birds can be easily observed.

Faith Talk:

- Close your eyes and imagine soaring like the birds. Describe what you see, feel, and think.
- Most birds fly easily, without much effort. Once they learn as babies it comes natural to them.
- We are often weighed down by problems—a bad grade on a test, problems with friends, a fight with a family member, illness, or accidents. What problems do you struggle with in your life?
- Hold in your hearts the promise that you can hope in the Lord because He will lift you up on wings of an eagle! What will happen to your problems as you hope in the Lord?

Faith Activities:

- Have a high jump contest. Think how much higher an eagle can fly!
- Cut a picture of an eagle from a magazine or book, or download a picture from the Internet. Glue the picture on a piece of construction paper and display it as a reminder of this verse.
- Write all your worries on a piece of paper, and pray that God will give you the strength to not grow weary in your troubles. Throw the paper away.

Dear Father, God of Power, Strength, and Comfort,

When we are struggling with burdens, we can wait and hope in You, for You will lift us up on wings like eagles. You have promised to give us strength. Help us to take comfort, and be strengthened in our faith in Your Son as we remember Your promise. Through Jesus we pray. Amen

From: "FAMILY FAITH WALKS"

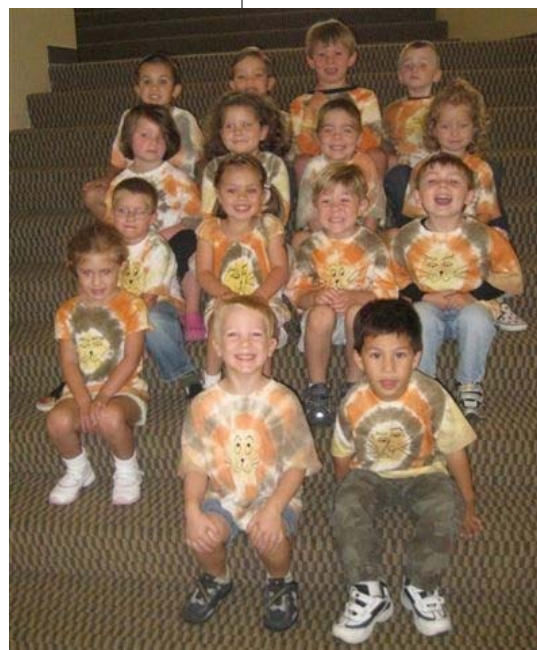
By Kelly J Haack, Concordia Publishing House



WHAT'S NEW AT PRESCHOOL?



Lions
(pre-kindergarten)
have been
spotted in
the build-
ing!



Making their
"Lion"
t-shirts!
We had Greeeat!
help from our
Mom!



SCHEDULE OF EVENTS

- 10/4—Hospitality Teams Meet
- 10/18—Evangelism Workshop
"Story of Jesus: Power to Change Lives"
- 10/22—Flu Clinic
- 10/26—Reformation Sunday
Quilt Sunday
Suerkraut Dinner after 2nd service

Sunday Morning Education Hour Sched:

- New Community Adult Class—Upper Room
- 3-Year-olds to 4th graders: Meet in Library (pick up: Pre-K in room 157; 1st & 2nd Grades in room 152; 3rd & 4th grades in room 153)
- 5th & 6th grades: Room 207
- 7th & 8th Grades: Confirmation Rm
- 9th to 12th Grades: High School Youth Room

Village Night Schedule (Wednesdays):

- 5:15 —Youth Worship Arts
- 5:45—Dinner
- 6:30—Education for Youth & Adults:
Heroes of the Bible: Preschool
Armor of God: K-4th Grade
Club 56: 5th & 6th Grade
Carharts for Christ: Men's Study
Women's Bible Study
- 6:30—High School Youth Group
- 6:30—Handbell Rehearsal
- 7:30—Confirmation Youth Group
- 7:30—Cantorei Rehearsal

October Outreach:

Compass Center:

- Prepare and serve a meal on October 24
- September/October Offering taken for this ministry

Operation Christmas Child:

- Shoebox Drive begins

InAsMuch Sunday:

- Quilt display and blessing October 31st (Reformation Sunday)

October 2008

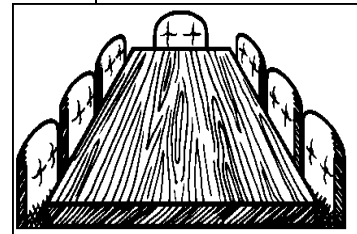
SUN	MON	TUE	WED	THU	FRI	SAT
			1	2	3	4
			10:00 <i>Word of Life</i> Study 5:15 Worship Arts 6:00 VN Dinner 6:30 Education 6:30 Handbell 7:30 Cantorei	11:30 Writers' Class 7:00 Sounds of Grace		10:00 Hospitality Team Mtg
5	6	7	8	9	10	11
8:30 Classic Worship 9:45 Education for All Ages 11:00 Praise Worship	7:00 Womens' Bible Study	9:00 InAs-Much 1:30 Staff Meeting	10:00 <i>Word of Life</i> Study 5:15 Worship Arts 6:00 VN Dinner 6:30 Education 6:30 Handbell 7:30 Cantorei	9:45 Mary Martha Circle—OOB 7:00 Sounds of Grace		
12	13	14	15	16	17	18
8:30 Classic Worship 9:45 Education for All Ages 11:00 Praise Worship	7:00 Womens' Bible Study 7:00 Stephen Ministry	9:00 InAs-Much 1:30 Staff Meeting 7:00 Church Council	10:00 <i>Word of Life</i> Study 5:15 Worship Arts 6:00 VN Dinner 6:30 Education 6:30 Handbell 7:30 Cantorei	11:30 Writers' Class 7:00 Sounds of Grace	10:00 Book Study Grp	10:00 Evangelism Workshop 7:00 Choir: Celebration Concert—OOB
19	20	21	22	23	24	25
8:30 Classic Worship 9:45 Education for All Ages 11:00 Praise Worship	7:00 Womens' Bible Study	9:00 InAs-Much 1:30 Staff Meeting	10:00 <i>Word of Life</i> Study 10:00 Flu CLinic 5:15 Worship Arts 6:00 VN Dinner 6:30 Education 6:30 Handbell 7:30 Cantorei	6:30 PS Lions Pumpkin Carving 7:00 Sounds of Grace		
26	27	28	29	30	31	Next Beach-comber Deadline: Wed., October 15
8:30 Classic Worship 9:45 Education for All Ages 11:00 Praise Worship 12 N Sauerkraut Lunch	7:00 Stephen Ministry 7:00 Womens' Bible Study	9:00 InAs-Much 1:30 Staff Meeting	10:00 <i>Word of Life</i> Study 5:15 Worship Arts 6:00 VN Dinner 6:30 Education 6:30 Handbell 7:30 Cantorei	7:00 Sounds of Grace		

CHURCH COUNCIL HIGHLIGHTS

Our church council met on September 9 for our monthly meeting. After Biblical equipping from Matthew 8, we continued our discussion on Jim Collins' book, "Good to Great." The following points were discussed:

- ▶ Choir Room now accommodates the Handbells as well.
- ▶ Confirmation class is held Village Night and continues to be a three-year program.
- ▶ Confirmands will be trained as acolytes and serve 4 times a year,
- ▶ twice at each service.
- ▶ Bible camp for confirmands next year.
- ▶ High school youth will decide between a New Orleans or San Francisco youth gathering or Mexico or Appalachian missions.
- ▶ Tracking system for staff vacations implemented.
- ▶ Evangelism event Saturday, October 18
- ▶ Intergenerational faith event in October.
- ▶ Waiting to hear if Tent City 3 is moving to Calvin Pres.
- ▶ Staffing needs deferred to council retreat at Rosary Heights 9/20.
- ▶ New Consecration Sunday is 11/16.
- ▶ Outreach Ministry calendar discussed.
- ▶ Electrical hook-ups for new coffee system now complete.

Jane Pedersen,
Secretary



Our Council gives leadership and oversight to the congregation. The Council consists of: Kevin King, Jane Pedersen, Yolanda Matheson, Amy Day, Jim Borrow, Dana Davies, Sandy Bailey, Peter Wick, and Pastor Bjorge.

THE STORY OF JESUS: THE POWER TO CHANGE LIVES

At this workshop participants will explore such questions as: Why are you a Christian?

How has Jesus made a difference for you?

What does a congregational culture which knows that Jesus makes a difference look like?

What in our congregation communicates abundant life in

Jesus Christ?

What in our congregation communicates invitation and acceptance?

How can you plan for congregational change toward a more evangelical culture?

This workshop was developed by Pr. Bjorge and leaders of the St. Paul Area Synod and has been used by a variety of con-

gregations and ELCA synods.

When: Saturday, Oct. 18
10 a.m. to Noon

Where: FLRB Library

Led by: Pastor Bjorge

Who: Anyone interested in planning and leading evangelical congregational change and offering practical ideas for sharing the story of Jesus.

WE PRAY FOR...

God's blessings and care for the following members and friends who are ill or in need: for **Karen**, Doris Ginter's daughter; for **Gina**, friend of Rachel; for the father of Art and Judy Larson's daughter-in-law; for **Betty Jean Bartholomew**, former music director at FLRB; for **Morgan Hill**, friend of the Anneberg family; for **Lois and family**, friends of Paula Hunt-Higgins; for **Ozzie Berg**, uncle of Eric Larson; for **Jens Kieler**, friend of Eric Larson; for **Jack Schweiss**; for **Tara Ashelman and her co-workers**; for **Cindy Geis Wright**, friend of Sherry

Shellman; for **Rayn and Faith**, great niece & nephew of Laurie Rabinishad; **Bonnie Wagner**, former member and friend of the Darryl Pedersens; for **Noni and her family**, especially **Tab**, friend of Kathy Adams; for **Claire**, friend of Nancy Dalan; for **Daniel Kush**, son of Helen Kush; for **Beverly Clauson**; for **Kristen Jaquish**.



Thank you, God, for all the gifts of your world.

We pray for comfort for the family and friends of those who have passed into your loving arms: **Edna Dyke**, Steve Ellersick's grandmother; **Mary Jo Rossell**; **Lindsay Brown Zapolsky**, friend of Sherry Shellman;

We pray that **Boeing and the machinists** find a mutually beneficial settlement of their contract, and that those affected will be supported.

Church Office @ 206 546-4153 or	
E-mail: office@flrb.org	
Web: flrb.org	
<i>Staff:</i>	<i>Ext</i>
Rev. Dr. John Bjorge	225
pastorjohn@flrb.org	
Carolee Grumm, Parish Administrator	223
parishadmin@flrb.org	
Elizabeth Jordan, Dir Music Ministries	229
music@flrb.org	
Terry Baird, Director of Faith Formation	222
ffd@flrb.org	
Kären Beasley, Preschool Director	227
preschool@flrb.org	
Linda Millo, Office Manager	0
office@flrb.org	

Why Are We Here?

Our Mission

To be a gathered people living, loving, and serving as Jesus did—so that all may know Him.

Our Vision

First Lutheran of Richmond Beach is dedicated to inviting all people to discover a confident faith in Jesus, equipping them with a faith that works in real life, and sending them out as ambassadors and servants of Christ in the world.

Vision
Mission
& Values

Our Values

Jesus is the center of our life and gives us the values we hold! The following attributes we pray will increasingly mark us a community of disciples of Jesus Christ and as we think about shaping our ministries, these are the values that hold the river within its path:

Hope - We value the meaning and purpose God gives us amidst a fragile world.

Relationships - We value every person as Jesus did.

Relevance - We value ministry that meets people's deepest needs.

Growth - We value both spiritual and numerical growth that has biblical integrity.

Hospitality - We value tearing

down any roadblocks that keep people from entering and being assimilated into this community of Christ.

Stewardship - We value the ability we have to give of our time, talents and possessions for the sake of furthering God's kingdom on earth.

Excellence - We value taking risks for the sake of the gospel and to elevating our ministry so that quality might be achieved.

Imagination - We value imagination, innovation, and creativity of mind and spirit in our worship of God and in our service to our neighbor and world.

Courage - We value the courage necessary to boldly stand firm in the gospel, confessing the faith and hope in Jesus Christ that lives within us.



ADULT MISSION TRIP: MISSION JAMAICA A VACATION WITH A PURPOSE!

Like last year, we would like to see if there is a team of individuals interested in participating in Mission Jamaica. Mission Jamaica is a ministry to the children of Jamaica, so of whom live in orphanages, others in group homes, and still others who have disabilities. It was started by St. Andrew's Lutheran Church in Mahtomedi,

MN and sends hundreds of volunteers from many Lutheran churches from throughout the country each year. We would hope to send a team from FLRB January 24-31, 2009. The approximate cost will be \$2,400 each.

So far 8 have indicated a strong interest. If you are interested in learning more

and possibly participating, please speak with Pastor Bjorge!

This will truly be a purposeful vacation (staying at a seaside resort with wonderful food and entertainment) while also working to serve those in such desperate need each day. If you are considering this adventure, please let Pastor know of your interest.

*"This will truly be
a purposeful
vacation..."*

NEW SOCKS FOR THE COMPASS CENTER

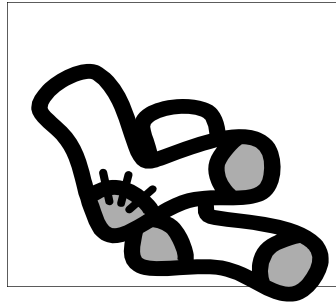
October is Compass Center emphasis month. We will be supporting the ministries of the Compass Center in several ways. A team from FLRB will be cooking and serving dinner for the residents of the Compass Center's Pioneer Square location on Wednesday, October 22nd. We would like to take with us as many new socks as we can gather. The winter months are coming and there are a lot of feet needing warm, new socks.

We would also like to take any sample-size toiletries

as we can get. If you have some of those hotel shampoos and little bars of soap that you aren't planning to use, please consider donating them to our cause. We will make sure they get to people who *really* can use them. A bin is set up in the Narthex for you to drop off your contributions.

And our Outreach offerings for September and October will be going to help fund all of their vital programs.

The Compass Center has also started a congregation at the Pioneer Square location called The Church



of Steadfast Love. Pastor Kristy Daniels will be preaching at FLRB in January, but their regular weekly worship is Sunday Evening at 6:00. We will be organizing a trip to worship with them one Sunday during October. More details will coming soon.

"He never leaves us where He finds us, unless we insist.."

BEAT THE BUG

Flu Shot Clinic Coming Soon!!!

Save the date **Wednesday October 22nd from 9:00 to 10:30 AM**

Visiting Nurse Services of NW will provide the shots. The cost: Flu Shot \$30, Pneumonia Shot \$40.

These shots are also covered by Medicare B and Secure Horizons.

If you have any questions, or you would like to sign up, please call Kären Beasley @ 206-546-0320



SENIORS LUNCH

The seniors of First Lutheran are invited to a potluck lunch in the library on the third Wednesday of each month. Each month a different senior will take responsibility for planning the program. John Sullivan has graciously offered this month and will be bringing someone from Trinity College to talk about their ministry and their recent move to Everett. Join us: **Wednesday, October 15 at 11:30.** And come to the Bible Study at 10 a.m. as well! Bring a dish to share *and* bring a friend!

LIST OF "HELPING HANDS"

Finding just the right set of helping hands is always difficult, so I am trying to compile a list of "great" helpers, so those in need can feel safe calling. If you have a great window-washer, housecleaner, painter, gardener, handyman, electrician, plumber, etc. please let me know. This list will be a resource for our church family but

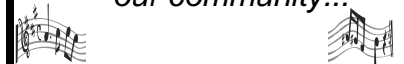
will not be endorsed by the church. If you are a "helping hand" provider, let me know, as well, so we can add you to the list! This will be a service to those who need, and those who give!

Please contact me: Cathy Thomas, 206 542 9161 email HCThomas@aol.com

You can also drop a note to the office or fill out a pew card!



Celebrating the music of our community...



Friends of First
presents

"Prophets and Angels"
An Advent Festival of Lessons and Carols

Featuring
Cantorei of First Lutheran Church
Shelley Reiss, oboe
The Mosaic Brass Quintet

Sunday, December 14th
3:00pm

Free Admission
Goodwill Offering taken for The Heifer Project



CHILDREN'S NEWS

Carnival

The second annual Rally Day carnival was a huge success!! We had a special visitor from the movie "The Incredibles." Kids won goldfish, ate hot dogs, played on an obstacle course, and played many games.

*Thank you to all who

helped with this awesome event.*

Living Inside out (Sunday school for 3yr-4th Grade)

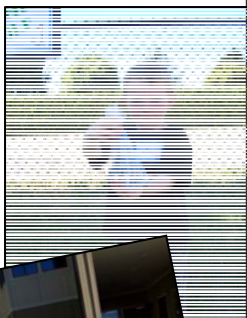
In September and the first part of October, the kids are learning about **Bible Heroes** and how they themselves can be heroes for the faith. The



next unit is called **Treasure Island**, and the kids will learn about giving to others and God's greatest gift to us.



2008 Rally Day
Carnival
September 7th



MIDDLE SCHOOL/ HIGH SCHOOL

Youth Quake/Zone November 21-23 2008 cost \$165 Grades-7-12

All youth are encouraged to go on this fun weekend event at the Marriot Seattle. This is a weekend filled with hotel fun, Christian bands, Christian speakers, a service project and time to connect with other Christian youth!!

Middle school and high school youth groups

meet every Wednesday from 6:30-8:30pm. All youth are welcome!

Registration forms

All children and youth who participate in any activities at FLRB need to have a pink, yellow, orange, or green registration form filled out. If you need one of these, please contact Terry Baird.

Volunteers

Thanks to all those who are volunteering this year. We have over 25 adults helping in the children youth and family programs. The energy we have this year is because of your service!! Please know that we can never have too many volunteers and I would love to encourage you to consider serving our church in this capacity.



Harvest Party

Wednesday October 29th

6pm-7:30pm

Dinner, Games, Trunk or Treating, come in costume and join us for a night of family fun!!

MUSIC MINISTRY

Alleluia Choir (for children ages 3-K) & **New Song** (1st grade—11 yrs) are off to a great start! The choirs will be singing in worship on October 5 at 11:00am. If you have questions or are interested in enrolling your child, please speak to either Lisa Van Horne or Elizabeth Jordan. **Joyful Jive** is on the move this month, too! You'll see our children dancing in worship on October 26 at 11:00am. Speak to Karen Herr for more details!

The Handbell Choir rehearses on Wednesdays from 6:30-7:30pm. After a great workshop in September, we're ready to ring, but we could use one or two more ringers. Are you looking for a way to get connected to the music ministries of First? This is a great way to meet wonderful people and make music together. Ringing is great fun, good exercise, and a beautiful addition to our worship. Please speak to Elizabeth Jordan if you're being called to serve in this way.



Friends of First had a great turnout for the first concert, and raised over \$250 to benefit "Embracing Shoreline," an endeavor among area churches to work with our schools. The Walton String Quartet was wonderful. Thank you to the volunteers who helped make this a success! The next concert is Dec. 14 at 3:00pm, and features Cantorei, Shelley Reiss on oboe, and the Mosaic Brass Quintet.

The Music Room gets a facelift! On Labor Day, an awesome group of laborers gathered to remove the very old wooden riser from the music room. Some of the wood will be used to create new flooring in the Loft for our tech booth. Thanks to all the guys who gave up a holiday morning to work at church. The Holy Spirit is moving in this place!



Thanks and good news from Elizabeth Jordan

On a personal note, thanks to all of you for supporting me as I took my American Guild of Organists' "Service Playing Exam." I passed with flying colors and am now certified!

Also, I will have 10 hymn arrangements published by Augsburg Fortress in upcoming volumes of *ELW: Introductions and Alternate Accompaniments for Piano*. As a composer, it is a privilege to work in a church that so supports the arts, artists, and their endeavors. Thank you!



Christmas Time with
MICHAEL W. SMITH
A celebration of Christmas with
Michael W. Smith and a 67 Piece
Symphony Orchestra
DECEMBER 13, 2008
OVERLAKE CHRISTIAN CHURCH
3:00 AND 7:00PM SHOWTIME
9900 WILLOWS RD NE - REDMOND
TICKETS AVAILABLE AT THE OCC BOX OFFICE
CHARGE BY PHONE 877-840-0457
ONLINE AT WWW.OCC.ORG

Save the date & sign up on the Music Ministry board. Tickets are \$37.50 plus handling for a group of 10 or more. More info coming soon!

Sounds of Grace will be attending the Christian Musician Summit at Overlake Church, Nov. 14 & 15. Mark your calendars!

First Lutheran Church of
Richmond Beach

18354 Eighth Avenue NW
Shoreline, Washington 98177

Phone: 206 546-4153
Fax: 206 456-6741
E-mail: sooffice@flrb.org

We're on the Web:
www.flrb.org

*To be a gathered people living, loving and serving
as Jesus did...so that all may know Him!*



The Beachcomber

Non-Profit Org.
U.S. Postage
PAID
Seattle, WA
Permit No. 410

Address label Here

CONSECRATION SUNDAY IS COMING

Congregations that approach financial stewardship from a biblical perspective do not view the money Christians give to their church merely as a way to pay its bills. Rather, such congregations see financial contributions as a way to help people grow spiritually in their relationship with God by supporting their church's mission and ministry with a percentage of their incomes.

Our congregation's stewardship committee has selected the *New Consecration Sunday Stewardship Program* as a way to teach the biblical and spiritual principles of generous giving in our stewardship education emphasis this year.

New Consecration Sunday is based on the biblical philosophy of the need of the giver to give for his or her own spiritual development, rather than on the need of the church to receive. Instead of treating peo-

ple like members of a social club who should pay dues, we will treat people like followers of Jesus Christ who want to give unselfishly as an act of discipleship. *New Consecration Sunday* encourages people toward proportionate and systematic giving in response to the question, "What percentage of my income is God calling me to give?" During morning worship on Consecration Sunday, we are asking our attendees and members to make their financial commitments to our church's missionary, benevolent, and educational ministries in this community and around the world.

Every attendee and member who completes an *Estimate of Giving Card* does so voluntarily by attending morning worship on Consecration Sunday. We urge people to attend who feel strongly opposed to completing a card. The procedure is done in such a way that no one feels

personal embarrassment if he or she chooses not to fill out a card.

We will do no home solicitations to ask people to complete cards. During morning worship our guest leader will conduct a brief period of instruction and inspiration, climaxed by members making their commitments as a confidential act of worship. We will encourage participation in Consecration Sunday events through the Consecration Sunday team and council members. Since we will make no follow-up visits to ask people to complete their cards, we will make every effort to inform, inspire, and commit everyone to attend Consecration Sunday worship.

Thanks in advance for your enthusiastic participation in Consecration Sunday events on November 16th.

Yolanda Matheson
Consecration Sunday, Chairperson

Sunday Worship Schedule:

8:30 AM—Classic Worship

11:00 AM—Praise Worship