

First Lutheran Church of Richmond Beach

18354 Eighth Avenue NW
Shoreline, Washington 98177-3546

Phone: 206 546-4153
Fax: 206 546-6741
E-mail: office@flrb.org

www.flrb.org



Building: Updating our Mission Outpost

Here's a news flash: our flat roof over the office wing leaks—has for years. It's been patched... again. Over the past year we've spent \$15,000 patching several areas of our old roofs.

Recently the property and building task force met to discuss a more "permanent" solution for the office wing (which has some serious water damage). We could fix the roof in a more substantial way for around \$35,000. Or we could replace the office wing: add a beautiful though modest prayer chapel, two restrooms, storage, and offices that would create a building with much more usefulness

for ministry. The approximate cost is \$350,000.

No decisions have been made either way. Both the property/building task force, and the church council would value congregational input.

Two informational opportunities to discuss these options are planned. Preliminary plans will be laid out and we want to know your will regarding this matter. Since we plan to take on no more debt, this would have to be a cash project—we'd raise all the funds and pay as we go.

Please attempt to attend Wed. night Feb.10th at

6:30 or on Sunday morning, Feb. 14th at 9:45 during the education hour, to be informed and give your input.



Non-Profit Org.
U.S. Postage
PAID
Seattle, WA
Permit No. 410

Return Service Requested



First Lutheran Church
of Richmond Beach

Volume 107, Issue 2

February 2010

The Beachcomber

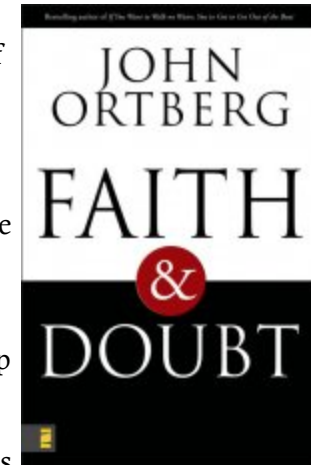


FAITH & DOUBT

We all long to live with certainty, to know without a doubt that we've bet our life on what is true. Yet even those known for their deep faith—people like Martin Luther, Billy Graham, and Mother Teresa—have wrestled with the unanswerable and often painful questions of faith.

This Lent, FLRB plans on taking an honest look at the misgivings and uncertainties that often obscure our view of God. Together we will read John Ortberg's *Faith & Doubt* in which he candidly describes grappling with his own personal doubts as well as walking with others through the faith-shaking storms of life. Together we will see how we can actually celebrate the gift of uncertainty as we allow the right kinds of doubt to actually deepen our faith and intimacy with God.

Pick up your copy of the book (in print or on cd) at the Hospitality Desk. And sign up to be a part of a small group to discuss the book. Small groups will have a study guide to facilitate wonderful and open conversation! This Lent let's all plan to engage our faith and our doubt! Lent begins on Ash Wednesday, February 17.



Inside this issue:

A Word from Pastor Bjorge	2
Seven Deadly Sins	3
Haiti Relief Effort	4
Prayer Requests	6
Central Lunch in Feb.	6
February Calendar	7
Council Highlights	10
From Saratov	11
Concert Series	11



Alpha

Coming to FLRB
this Spring!
www.alpha.org

What Is Alpha?

Alpha is an opportunity to explore the meaning of life in a relaxed, friendly setting. The Alpha course usually meets once per week for 10 weeks. Each session, people enjoy great food, laughter and learning in a fun and friendly atmosphere where no question about life or God is seen as too simple or too hostile...questions like—Is there a God? Why am I here? Where did I come from? Where am I going?

Alpha is for anyone...anyone who thinks there may be more to life than meets the eye. People attend from all backgrounds, religions, and viewpoints. They come to investigate questions about the existence of God, the purpose of life, the afterlife, the claims of Jesus and more. Some people want to get beyond religion and find a relationship with God that really changes life. Others come for the close, long-lasting friendships that are built during the Alpha course. Many guests have never been to church, others may have attended church occasionally but feel they have never really understood the basics of the Christian faith. Everyone is welcome! Alpha begins at FLRB this spring and will be facilitated by Intern Wolfgang!

An Invitation from Pastor Bjorge

Can we change the world just by listening to each other? Margaret Wheatley begins her book *“Turning to One Another: Simple Conversations to Restore Hope to the Future”* by saying ‘Yes, we can!’ She believes that we can change the world through conversations where we have a chance to speak and to feel heard.



Every day we’re bombarded by problems that are overwhelming when faced alone. There are problems that affect us personally, or affect our families, our communities, or the world. As individuals, we can only solve these problems by coming together and sharing our ideas and experiences. Being in relationship, being heard, not only helps our emotional health, but is the beginning to solving the problems of the world.

Conversation is thinking together. Creativity comes from combining things in new and interesting ways. This is what can happen from a great conversation.

Over the course of my two and a half years at First Lutheran, many of you have come into my office or asked me out for lunch or coffee, or asked me to come to your home for nothing more than conversation. These have been some of the most memorable and amazing experiences I’ve ever had in ministry. Many of you know that I have an open door policy and a lot of you likewise are availing yourselves of that by stopping in for a cup of coffee and conversation. You’ve talked with me about things like family, faith, values, church politics, dreams, hopes, worship, the ELCA, mission, theology, the Bible, ministry, and life... and these conversations have been moving, to say the least! They’ve changed me—and in turn we together are changing the world.

But some of you didn’t know that I have an open door policy or that I’m available to meet you somewhere for conversation (Starbucks), and so haven’t engaged me in conversation. We’ve both been diminished by that! Let me offer any of you, any and all of you, an open invitation—if ever you simply want a chance to speak and to feel heard, I would love to have the opportunity to have conversation with you. Because I think in doing so, we can change the world!

Sometimes people think pastors are busy... my wife will tell you, it’s true! But nothing is a higher priority for me than to make time for the members and friends of First Lutheran. Conversation—our thinking together—is what propels us forward in ministry. It’s what allows us to work together, to form a certain synergy, to become yoked together as a ministry team—bound together for the sake of the world.

Thanks to all of you who have graced me with life-giving, albeit sometimes hard, conversation, May you all know how much I value it. Please know how much I’d value hearing from the rest of you on any subject close to your heart.

—Your Brother in Christ,

Pastor John

“Let me offer any of you, any and all of you, an open invitation—if ever you simply want a chance to speak and to feel heard, I would love to have the opportunity to have conversation with you. Because I think in doing so, we can change the world!”

From Saratov...

„... the Messiah, the Lord has been born tonight...”

In this year the Christmas service was captioned with the words: „The Lord is almighty!”.

2000 years ago he moved the whole universe to let his son come to this earth. Luminaries obeyed his will and showed the way to the king of kings for the three wise men. Emperor Augustus obeyed his will unknowingly with the census. Also Joseph obeyed Gods will when he hit the road with his pregnant wife. When we listened to the Christmas story in our new church we understood that nobody can hinder him. We either can obey his will and be glad or we can keep distance and only look at Gods deeds from a distance. Nobody could have known that we will celebrate Christmas 2009 in our new church. But “God can do what men

can’t!”(Luke 18,27).

If we are in troubles we can should remember that God, who reigns the whole universe also can reign in our life.

Konstantinowka.

Christmas visitation is already for many years a tradition in our congregation. This year was no exception. On December the 29th we visited the village Konstantinowka, which is 35 away from Saratov. In the local school the children learn German and the teachers annually prepare the Christmas festival after the Gregorian calendar.

One of those teacher visits our church. This is why we have the opportunity to preach in this school.

We often recognized that the people from the village are more frank and honest than the people from the city. They

receive the message of the birth of Jesus Christ with Joy. The hard work on the fields helps them to understand the grace of God, which he showed to the shepherds. Of course you can not say that the people from the village are common, but because of the lack of jobs in the rural areas and the resulting lack of funding those people haven’t got these opportunities the people from the city have: a holiday at the seaside, to visit a theatre and much else.

This is why they feel underprivileged. And so they are glad to hear that not the elite, but the shepherds have been worthy to worship the king.


May the Lord bless you,

Alexander Scheiermann

(Ed. Note: See pictures in the full letter posted near the office)

Return of Our FLRB Concert Series!!

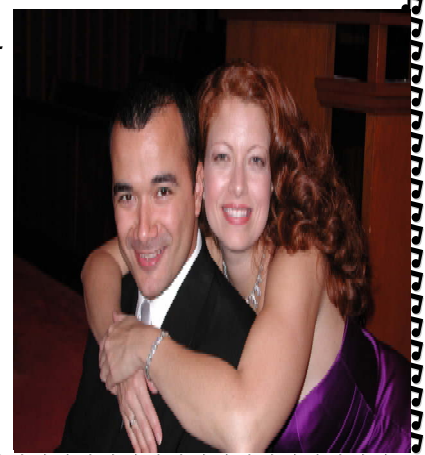
We are pleased to announce the upcoming concerts in the FLRB Concert Series:



February 16th - Sounds of Grace will be giving a concert of Contemporary Inspirational songs featuring the music of Chris Tomlin, Matt Redman, Brian Doerksen and others.

March 26th - Sonia and Omaldo Perez will present a Vocal Recital of classical pieces including works by Rachmaninoff, Poulenc, Barber and others.

In the following months, look forward to concerts by the Cantorei Choir and a solo Piano Recital performed by Omaldo Perez.



Council Highlights—January 5, 2009

- Intro to book study: [A Field Guide for the Missional Congregation](#).
- Review building committee possible resolutions to roof problems. Meetings of the Congregation will be held to discuss the next step for the pastor's office wing. A motion was passed to spend approximately \$6000 for a fibered aluminum coating to all the flat roofs on the education wing to give them 5+ more years of life.
- Minutes of the December meeting were read and approved.
- Treasurer: Offering in December was the second best in our history. We ended 2009 in the black.
- Pastor's Report: Christmas services were well attended—largest were 4:30 and 9:30 PM. Complaint of chancel congestion leads to a concerted effort to stow music equipment for the early service.

Submitted by *Jane Pedersen, Secretary*



Council Members:
 Amy Day, President
 Jerry Van Hoosier, Vice Pres.
 Mike Strand, Treasurer
 Jane Pedersen, Secretary
 Kevin King, Past President
 Rob McCuiston
 Barb Matlock
 Dana Davies
 Pastor John Bjorge

Do I need a will?

Without a will, state law dictates who will receive your assets and who will manage your estate. The state's plan for your assets may not include all of the persons that you would like to benefit and definitely will not include gifts to your church and other charities. A will also allows you to appoint a guardian for your minor children, choose a representative to carry out your wishes, and decide the final destination of your estate assets.

Making a charitable bequest (i.e., giving assets to your church or other charities through a will) is the simplest way to make a planned gift. You can specify in your will the amount or percentage of

assets that are to pass to the church. Your estate will receive an estate tax deduction for the bequest. There is no limit on the amount of the charitable gift made by bequest or on the amount that can be deducted for estate tax purposes.

As an alternative to a specific dollar amount or percentage bequest, you may wish to designate the church as the "residual beneficiary" of the estate. After children, friends and others have received specific bequests, the church as a "residual beneficiary" will receive what is left in the estate.

To be sure that you have an enforceable will that accom-

plishes your objectives, it is best to work with an experienced estate planning attorney. Carolee Grumm or Glenn Nelson of the First Lutheran Mission Endowment Board can help provide experienced attorney contacts if you need this assistance.

Endowment Board
 Glenn Nelson
 David Anderson
 Sam Capps
 Darryl Pedersen
 Cliff Day
 Carolee Grumm, Staff

A Word from Intern Wolfgang Laudert:

As I sit down at my desk to write this article, I realize that the pivotal stage of my internship has begun! This is an exciting time! I had a great vacation back east after Christmas, a time of reflection, rejuvenation, and renewal, with family and friends. I enjoyed my time at the Seminary, and now we (myself included) are well on our way in this new year of grace 2010! For me, this season of *Epiphany* is one of my favorite seasons of the church year. We have worshiped the Christ child at the manger. We have followed the star, like the Wise Men, bearing gifts of gold, frankincense, and myrrh. Jesus has identified with us totally and completely in the waters of His baptism in the Jordan River, where his Father spoke and said: "This is my beloved Son, with whom I am well pleased." We have heard Jesus teaching in his hometown of Nazareth, announcing that he is the Messiah, as he ushered in Jubilee! I think back to my sermon on that wedding in Cana of Galilee, when Jesus did his first sign, turning water into wine. I'm struck at how Jesus revealed his glory, and how his disciples believed in Him. Jesus Christ has come to reveal/manifest his glory *for us*, as well, so that *we too* might believe! I would remind you in this

season of Epiphany that as we follow Jesus, as we *abide* in Him, (who is the *Word*), and He in us, that Jesus would have us raise our expectations of all the great things he has planned *for us*. Jesus truly has come, to turn our water into wine, and to give us *abundant life*, and in our following, in our discipleship, He tells us that there will be surprises in store *for us* as we walk with him, even as he journeys with us! In our first Sunday in February, we will hear the story from Luke of Jesus calling his first disciples. And just as Jesus Christ called his first disciples, so too, Jesus Christ is *inviting* and *calling* us! In this season of Epiphany, Jesus tells us to "*put out into the deep and let down your nets for a catch.*" Then he tells them, and us: "*Do not be afraid; from now on you will be catching people.*" This reminds me of our Mission Statement: *Living, Loving, and Serving as Jesus did... so the world may know Him!* I'm enjoying reading with the staff and Church Council *A Field Guide For The Missional Congregation: Embarking on a Journey of Transformation*, published at Luther Seminary by Rick Rouse and Craig Van Gelder. This is what Epiphany is all about... in the light of Christ, embarking on this journey of following and discipleship, always asking the question:

The Seven Deadly Sins: Pride, Envy, Anger, Sloth, Greed, Gluttony, Lust

Wednesday evenings during Lent (beginning Feb. 17th with Ash Wednesday), we will be considering each week in worship one of the Seven Deadly Sins.

The Seven Deadly Sins are really attitudes that underlie sins. They were first identified by John Cassian (360-435) and later refined by Pope Gregory (540-604). They provide keys to understanding our faults and the actions that result, and a framework for self knowledge. The idea is that if we understood how they factor into who we have become, we would understand much more about ourselves

and our effect on others. While the Seven Deadly Sins never occur as a list in the Bible, they do occur many times individually.

Some people feel it's better to take a more positive approach to faith and not dwell on sin. Others believe all sin is equally repugnant to God, and so any classification of sins is wrong. Still others just want to forget the whole thing since they are saved and God loves them and really doesn't care about all this "stuff."

Yet let's be mindful of the inscription found at the [Oracle of Delphi](#):

What is God up to *among us*, as well as *in and through us*, and *around us!* The joy of Epiphany is that we catch glimpses of this, and we are caught up in what God is doing *for us*, as he reveals his glory to us, so that we may believe!

This season of Epiphany will end on Transfiguration Sunday which is February 14th. Jesus will take his disciples up a mountain. Elijah and Moses will be there. The disciples will exclaim how great it is to be there, on Mount Tabor, with Jesus. The Father will tell those disciples, and us, to listen to his Son, in the days ahead. We will then head down from that mountain top experience, because we can't stay there. February 17th is **Ash Wednesday**. Pastor Bjorge and I will begin our Lenten Midweek preaching series on *The Seven Deadly Sins*. For 40 days, we will journey with one another and with Jesus, to Jerusalem, and to the cross.

Just a heads up, this spring we will kick off our Alpha Course! Stay tuned for details! This will serve as my internship project. Jan. 31st and Feb. 7th, we will finish our teaching on the Apostle's Creed for Confirmation class. During Lent, David Ellingson will lead the Taking Root series for confirmation. See you in church!

Intern Wolfgang



Haiti Relief Effort Update

Update of ELCA funds as of 1/22/2010 (www.elca.org/bishopstatement)

- Two **water** purification systems to bring clean water to 25,000 people.
- Emergency **food** and **medical supplies** to thousands.

Blankets and tents to **shelter** 10,000 people who are homeless.

Funding, distributed through three partners, will increase as giving continues.

- \$300,000 has been sent to The Lutheran World Federation (LWF), a key responder and member of Action by Churches Together (ACT). The funds support LWF efforts to provide shelter to people left homeless by the quake.

- \$150,000 has been sent to Lutheran World Relief (LWR), Baltimore, for material aid.

\$150,000 will be sent to Church World Service (CWS) for construction of temporary water systems and distribution of water purification materials.

In addition, \$25,000 has been sent to Lutheran Services of Florida for initial support to refugees and Haitian Americans entering or returning to the United States.

If you would like to donate funds here are several easy ways to help support Lutheran organizations working in Haiti.

You can place funds in the offering plate on Sunday.

Make a check out to Lutheran World Relief (LWR) and **mark check Haiti** (Thrivent members are eligible for matching funds)

Make a check out to ELCA disaster relief fund and **mark check Haiti** (Thrivent members are eligible for matching funds)

Make a check out to FLRB and **mark check Haiti** (Not eligible for Thrivent matching)

Place cash in a special offering envelope and mark it Haiti.

If you prefer to go online please visit...

www.lwr.org

www.elca.org

Texting - Text to LWR 40579 for \$10 donation.

If you are a **member of Thrivent** you may donate directly on their website <https://www.thrivent.com/helpinghaiti/#> or write a check to LWR or ELCA Disaster Relief Fund and mark your check **Haiti** in order for your funds to be matched. *Do Not make a check to FLRB if you are a member and would like the Thrivent matching funds.*

****Remember 100% of your donation to these relief agencies will go to help the victims of Haiti.**

NOTE: As of January 31st, FLRB has collected **\$3,657** for the relief of the people of Haiti! Thanks to everyone who has made this difference!

FLRB Preschool and Kindergarten Fall Registration

Yes, it's true—it's time to register for Fall classes. We are excited to announce the addition of an afternoon Kindergarten class. We now have classes for 2 1/2 year olds through 6, two, three, four and now five days per

week—depending on your child's age. We also have a very popular Friday morning class for toddlers and their parents.

If you would like more information or would like to

schedule a tour, please give us a call.

Kären Beasley, Director
206-546-0320 or preschool@flrb.org

PRESCHOOL NEWS

Family Faith Walks—February Lamb of God

“The next day John saw Jesus coming toward him and said, ‘Look, the Lamb of God, who takes away the sin of the world!’” John 1:29

Faith walk:

As you take a walk, look for ways sin has damaged the world—litter along the road or graffiti on buildings. Look also for the things around which God said, “It is good,” like a bird built perfectly for flight or examine the intricate designs of an evergreen tree.

Faith Talk:

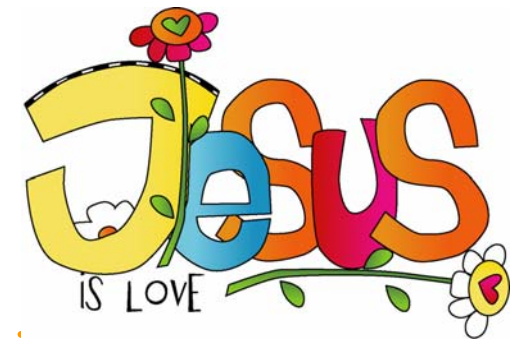
- Lent is a time to think about the sinfulness of the world and our own personal sinfulness.
- Sin has consequences. When you do something wrong, how are you punished?
- Although pain, sadness, anger, and other problems came into the world because of sin, God did not forget His people. List the many ways God shows His love and grace to us daily. For example, He blesses us with food and clothing He gives us laughter. And He gives us people who love us.

Faith Activities:

- Write a list of family rules and consequences.
- As a reminder of Christ's giving up His life for you, give up something such as desserts or television for Lent.

Dear Lord Jesus, Lamb of God,,
Thank you for taking away our sins on the cross! Help us to go and sin no more. In Your forgiving name. Amen

From *Family Faith Walks* by Kelly J. Haack-Concordia Publishing



PRESCHOOL SCRIPS News for February

We are excited to announce we now have QFC/Fred Meyers and Spiros Gift Cards available. Look for Snoopy and his pals. Our new order forms are in an envelope on the board!!

FEBRUARY ORDER DATES: 5TH AND 19

Thank you for your ongoing prayers and support!!!!



February 7th Service day in Sunday school- Children 3yrs-6th grade will be participating in multiple service projects. We will be making blankets for children's hospital, valentines for Mary's Place, and placemats for Central Lutheran.

Offering for Living Inside Out will continue to go to our Compassion Child, Abraham.



Parent's Night Out

A Childcare Fundraiser – Childcare will be provided by our high school students going to Puerto Rico this summer for a mission trip, along with their leaders and parents.

February 14th 5:00pm-10:00pm

Food-Games-Crafts-Movies

Cost: \$20 for the first child, \$10 for second child, \$5 for each additional child

Have a special Valentines Day and leave the childcare to us!

If you wish to sign up, please contact Terry Baird by 2/7/10

206-546-4153 ext 228 or 515-570-9259 or ffd@flrb.org

Elementary Retreat (Grades 1-6)

March 26 & 27, 2010

Sign up early because this is a HOT weekend! A 24-hour camp blast that will leave you wishing for more and dreaming about summer! (Must have an adult chaperone for every 8 campers.)

Cost: \$30 per person—Chaperones: \$20

Registration due 2/20/10 forms available at the Welcome Desk or see Terry.



Daddy Daughter Dance Saturday March 13th 5pm
Open to fathers and daughters of all ages!!
More information to come!!

Middle School and High school News

30 Hour Famine February 26th-27th– youth 7th-12th grade

The 30 hour Famine is a weekend-long service event where youth raise money for hungry children around the world. Youth will work on fundraising during the weeks leading up to the event. During the event, youth will participate in service projects as well as fun activities that will help keep their mind off of not eating. It is possible to participate and still eat. Last year we raised \$2597.46. That fed 7 children for one entire year. Please pick up a packet and turn in your consent forms ASAP

Summer opportunities for confirmation youth

Confirmation Camp at Lutherwood July 18-23 (youth going in to 7th - going into 9th): We encourage every confirmation youth to go to camp at least one year. This is a great week of having fun at camp with other confirmation youth around the area, as well as some teaching done by our church designed just for our kids. Camp is \$300 before April 1, \$390 after

Tillamook Habitat -Sunday, August 15th-Sunday, August 22nd (youth going into 7th-going into 10th). This is a great week of serving and building as well as growing in Christ. Please see Terry Baird if you are interested!

Holden May Youth Weekend May 22-24th High school youth 9th-12th grade

Holden is a weekend spent up in the mountains on Lake Chelan experiencing God's creation with youth from around the area. Special guest musicians this year are Agape and Rachel Kurtz.

Registration and \$50 deposit are due by 2/10/10 total cost is \$200

From Omaldo Perez, Director of Music Ministries

Dear Brothers and Sisters in Christ,

One fact of life that never ceases to amaze me is that we are all creatures of habit.

From the moment we open our eyes in the morning, to the time when we finally go to bed, we all practice small, peculiar and very personal ways to of dealing with our daily comings and goings. Be it the way we like to squeeze the toothpaste on our toothbrushes, to the specific position we adopt as we begin to drift off to sleep. Some patterns set in early in our lives-, and others develop over very long periods of time. In general, nevertheless, these particularities help us get through the day (freeing lots of brainpower to wonder precisely about things like these).

We are, in a way, programmed to default and experience reality in a way that we need to be vigilant about and guard against. We are for, better or worse, constantly viewing the world from the only vantage point we can: our own bodies; we see the world from the center of that existential axis we call I. Writers like Eduard DeBono have spilled much ink discovering and explaining the mechanisms that lead human beings to those patterns of

thought and behavior and has championed "lateral thinking" as a means to get people unstuck from their set ways. But I digress.

From that perspective, I have periodically been concerned by how easily we can lose sight of the prize of abundant life in Jesus. We are at danger of slipping into a state of being frozen in place by our innate default physiological wiring. One way this can happen is by singing the same old songs and doing the same old "comfortable" liturgy. Another way it can happen is by losing our sense of adventure and surprise when we come to church. How do we avoid losing vitality in our singing and in our thanksgiving? How do we avoid losing sight of the fact that in our lives- we have a tendency to become stuck or fixated on a particular action or thing? How do we keep from going though our adult lives, our worship, our relationship with God unconsciously, comfortably entrenched in habit?

As I share these questions with you, I seek comfort and security in the biblical witness. As the prophet Joel tells us, we are challenged to "return to the Lord our God, Who is gracious and merciful, slow to anger and abounding in stead-

fast love". The Lord calls us to be mindful of our (ossified, stale and sinful) ways, to come to terms with our nature and to wake up from our delusions. The hymn *Arise, Your Light has Come!* reminds us of the reason not to despair. And we need not despair! On the contrary, we need to rejoice. We are challenged to receive the Word our hearts fresh every day. We are called to be disciples of the risen Lord. Moreover, we are commanded to go out into the word and share the good news. And our souls magnify the Lord, for we know that God has done everything that is necessary for our salvation! God's salvation is our recipe for growth and change. Let us be more invested in everything we do! Lateral Thinking may be a useful tool, but once I am reminded of the amazing fact of God's gift, Lateral Thinking pales in comparison. As a result, it is truly difficult not to see the entire world that surrounds us bubbling up with the love of God for us and setting us free from our self centered ways. Indeed, let us return to the Lord constantly. In our returning we are reminded and finally realize that God wants to be "in communion" with us. God, the source of all being!

Glory Be to God! *Omaldo*

JOYFUL JIVE IS BACK!

All children ages 4 yrs - 6th grade who enjoy dancing are invited to be a part of our yearly Palm Sunday dance! We will be performing at the 11:00 Palm Sunday

worship service on Sunday, March 28th. Rehearsals will take place on Sundays - March 7th, 14th, and 21st from 12:00ish (after the second service) until 1:00 in the

sanctuary. Questions? Contact Karen Herr at kbherr@hotmail.com or 206.546.2564.

Our Prayer for Friends and Community



We pray...

We pray for God's blessings and care for the following members and friends who are ill or in need: **Nancy Dalan; Palmer Larson**, father of Dr Eric Larson; foe **Marilyn Sharp; Cindy Brovold**, daughter of Esther and Al Zahnow and sister of Candy De-Donker; **Hanna Varne and family**, friends of the Bongs; **Eva**, friend of

Song Rothwell; **Jane Hanson; Jeni**, cousin of Alysa Sturm; **Lanae Johanson**, granddaughter of Tom and Margaret Johanson; **David Bisson; Bev Clausen; Jerry Lewis; Steven Matheson; Lisa Everitt**, sister of Tina King; **Eric Pedersen;**

We pray for peace and

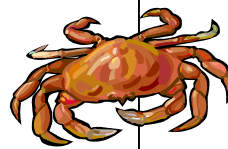
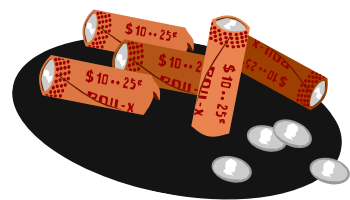
God's comfort for those who have lost loved ones: **Gary DeRue Anderson; Dolores "Dollie" Paulson.**

We pray for God's care to surround the people of Haiti, their families and friends, for the rescue workers and caregivers, and all who mourn loss because of the earthquake.

M & M Fundraiser throughout Lent

Starting Ash Wednesday we will be handing out mini M&M tubes. We ask that, during Lent, you fill them with quar-

ters and return them to church. All money collected will go towards the expenses of the 9 high school youth and 3 adults serving in mission in Puerto Rico this summer. Bills and checks are accepted! For more information see Terry Baird, Director of Faith Formation.



18th Annual Crab Feed...

February 6, 2010 at the Innis Arden Clubhouse.
All-you-can-eat Dungeness Crab:
\$25 per ticket
\$ 5 for a hot dog meal

4:30 to 8 pm
Proceeds benefit our youth programs and the Pastor's Caring Fund.

For tickets or questions, call Jane Pedersen at 206 542-3200.

FEBRUARY 2010 OUTREACH—CENTRAL LUTHERAN LUNCH PROGRAM

The **Community Lunch on Capitol Hill**, at Central Lutheran Church, has been providing meals for mostly homeless and some low income people twice a week for nearly 25 years. First Lutheran has been there since the beginning, and February is the month for our annual trek to Capitol Hill to cook and serve lunch on Fridays.

Each year we seem to say that the demands keep going up, and unfortunately they do.

Last year we were serving an average of 225 meals each week. By the end of 2009, that number is reported to have grown to 300 per week. Needless to say we will be adding to our recipes this year to make sure we have enough for everyone who comes through the serving line.

Signups for volunteers have already started. If you would still like to volunteer, check the board in the narthex. Or if you can't help in person, we can al-

ways use cookies or brownies, and by all means monetary donations.

Your monetary donations during February go to offset the cost of the food we purchase in order to prepare these meals. You can just use the "Outreach" section of your envelope to designate your gift to the Central Lutheran lunch program.

If you have questions or would like more information about the lunch program, call Jim Borrow at (206) 546-3716.



February 2010

Schedule of Events

Sun	Mon	Tue	Wed	Thu	Fri	Sat	
	1 6:30 PS Teachers 7:00 Womems' Bible Study 7:00 Stephen Min Trng	2 9:00 InAs-Much 12:30 Staff Mtg	3 10:00 Word of Life 5:15 PM New Song & Alleluia Choirs 6:00 VN Supper 6:30 Education 6:30 Handbell Choir 7:30 Cantorei Choir	4 10 Prs' Text Study 11:30 Writers' Class 5:45 Sounds of Grace	5	6 Crab Feed @ Innis Arden	<ul style="list-style-type: none"> February 7th: Boy Scout Sunday February 14th—Welcome New Members received this morning! February 10th at 6:30 pm and February 14th at 9:45 am—Congregation Facility Information Meetings February 17th—Ash Wednesday Worship at 7:00 pm
7 8:30 Classic Worship 9:45 Education for All 11:00 Praise Worship 4:30 Confirmation	8 7:00 Stephen Min 7:00 Stephen Min Trng 7:00 Womens' Bible Study	9 9:00 InAs-Much 1:00 Staff Mtg 7:00 Council	10 10:00 Word of Life 11:30 Srs' Luncheon 5:15 PM New Song & Alleluia Choirs 6:00 VN Supper 6:30 Facility Information Meeting 6:30 Handbell Choir 7:30 Cantorei Choir	11 10:00 Pastors' Text Study 10:00 Mary Martha Circle 5:45 Sounds of Grace	12	13	
14 8:30 Classic Worship 9:45 Education 9:45 Facility Information Mtg 11:00 Praise Worship 6:00 Parents' Night Out	15—Presidents' Day PS & Office Closed 12 N Deborah Circle 7:00 Womens' Bible Study 7:00 Stephen Ministry Trng 7:00 Stephen	16 9:00 InAs-Much 1:00 Staff Mtg 7:00 Sounds of Grace Concert 7:30 Intern Comm Mtg	17—Ash Wednesday 10:00 Word of Life 7:00 Ash Wednesday Worship	18 10:00 Pastors' Text Study 11:30 Writers' Class 5:45 Sounds of Grace	19	20	
21 8:30 Classic Worship 9:45 Education 11:00 Praise Worship 4:30 Confirmation	22 7:00 Womens' Bible Study 7:00 Stephen Ministry 7:00 Stephen Ministry Trng	23 9:00 InAs-Much 1:00 Staff Mtg	24 10:00 Word of Life 6:00 Lent Supper 6:30 Lent Worship 7:15 Handbells 8:15 Cantorei	25 10:00 Pastors' Text Study 5:45 Sounds of Grace	26	27	30 Hour Famine
28 8:30 Classic Worship 9:45 Education 11:00 Praise Worship 4:30 Confirmation							<i>This calendar reflects only activities sponsored by FLRB—please check with the office to set any meeting.</i>